

Experimenting with mainstreaming

Nova Scotia Environment's Adaptation Workplan

Jennifer Graham, Kyla
Milne, Brittany White
NSE- CCU

NSE-CCU

- CCU coordinates NS government response to climate change
- Mainstreaming - Integrating adaptation into government priorities, planning, and operations



Source: https://www.google.ca/search?q=networks&source=Inms&tbn=isch&sa=X&ved=0ahUKEwinya-ettfLAhWGuoMKHcqPCRMQ_AUIBygB&biw=1680&bih=913#imgrc=kgobjBnehOEVuM%3A

Our Experience



- Research and information are useful in understanding risk and vulnerability; yet does not always lead to action on implementation
- Policies and regulations alone do not lead to acceptance and change
- Grants and technical support do not always create ownership or action
- Interdepartmental collaboration remains challenging
- Groups are oversimplifying resilience to mean risk mitigation

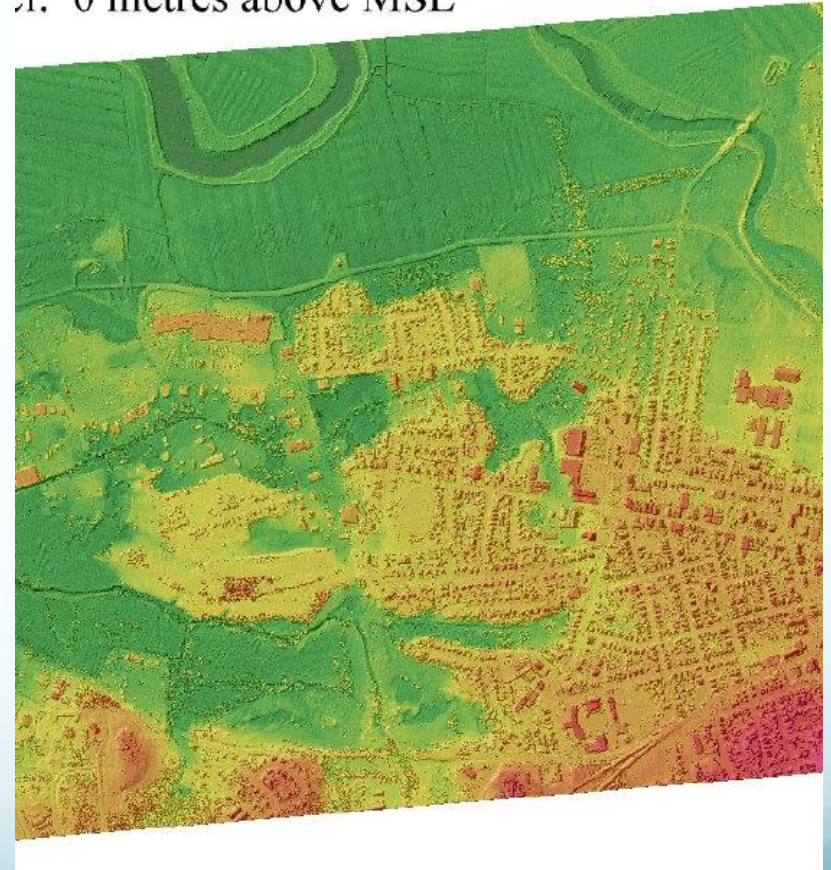
Source: <https://www.google.ca/search?q=culture+eats+strategy+for+breakfast&tbn=isch&tbo=u&source=univ&sa=X&ved=0ahUKEwiJ1dnhtfLAhVJsIMKHQwEDi4QsAQIGw&biw=1680&bih=913#mgrc=a9JSUb2JbmDraM%3A>

The wicked world of complex problems

Some characteristics of complex problems

- Divergent perspectives on problem and solutions
- Unpredictable cause and effect relationships
- Tried and true methods generally not suitable
- Cannot “solve it” , but can make progress

el: 0 metres above MSL

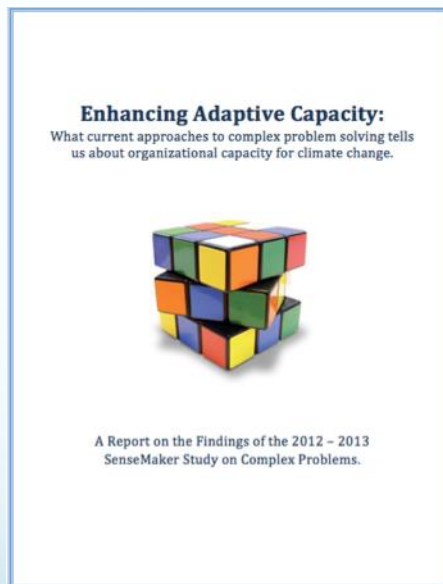


Truro flood risk map - CBCL

Our Research

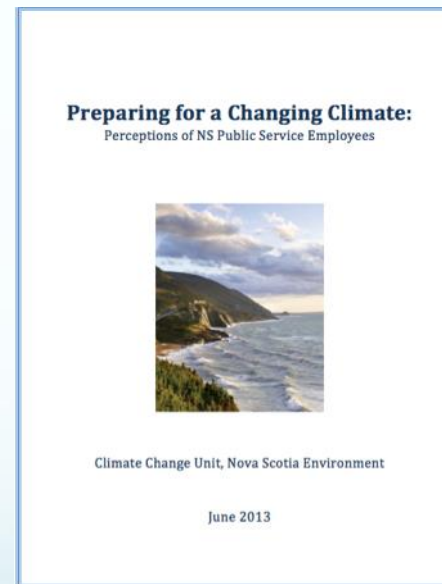
SenseMaker survey

Baseline on adaptive capacity



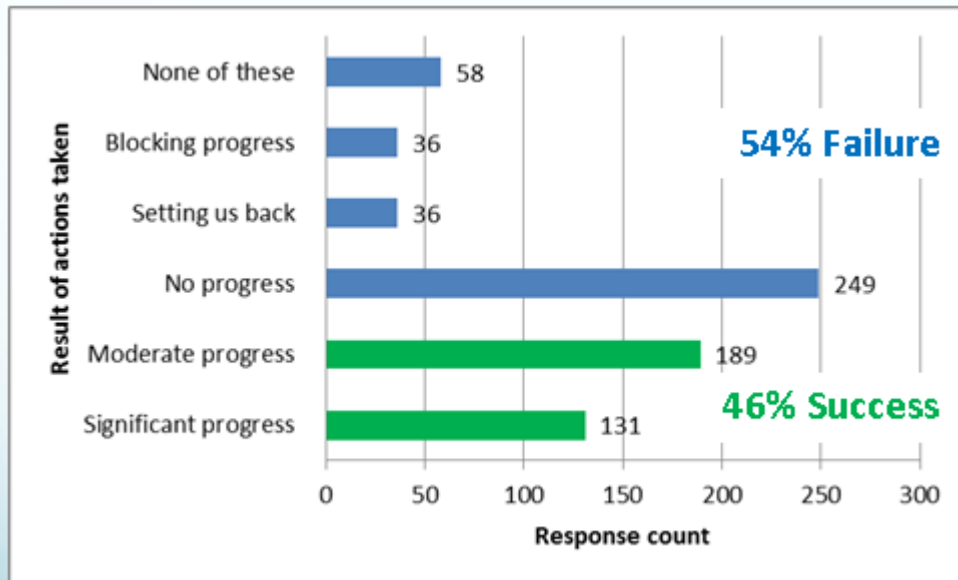
Attitudinal survey

Baseline on stated level of climate change integration



Our Findings

More failure than success

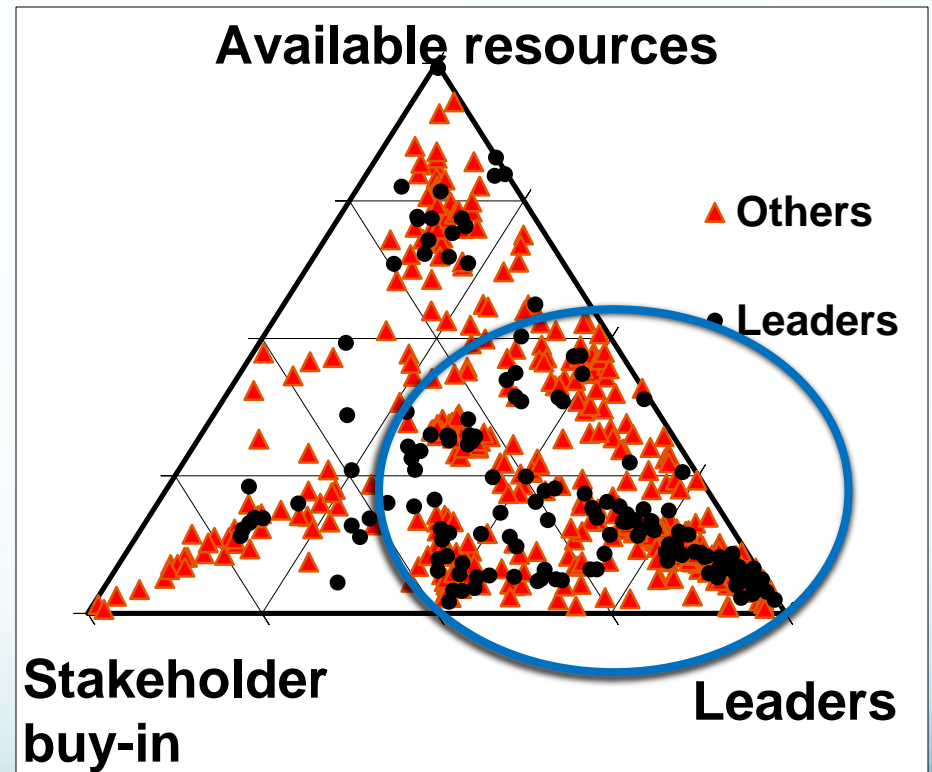
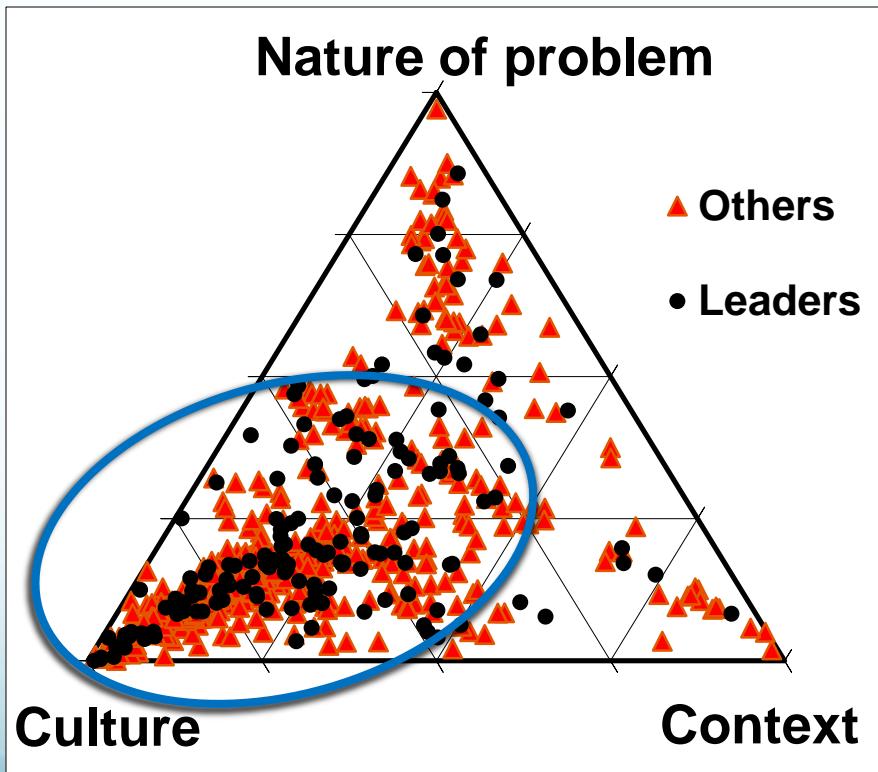


Concern does not necessarily lead to action

- 94% believe that Nova Scotia will have to prepare for and adjust to climate change.
- 93% believe that the province is not currently well prepared;
- Yet only 38% report integrating climate change preparedness into their work

Our Findings

- Factors that influence outcome:

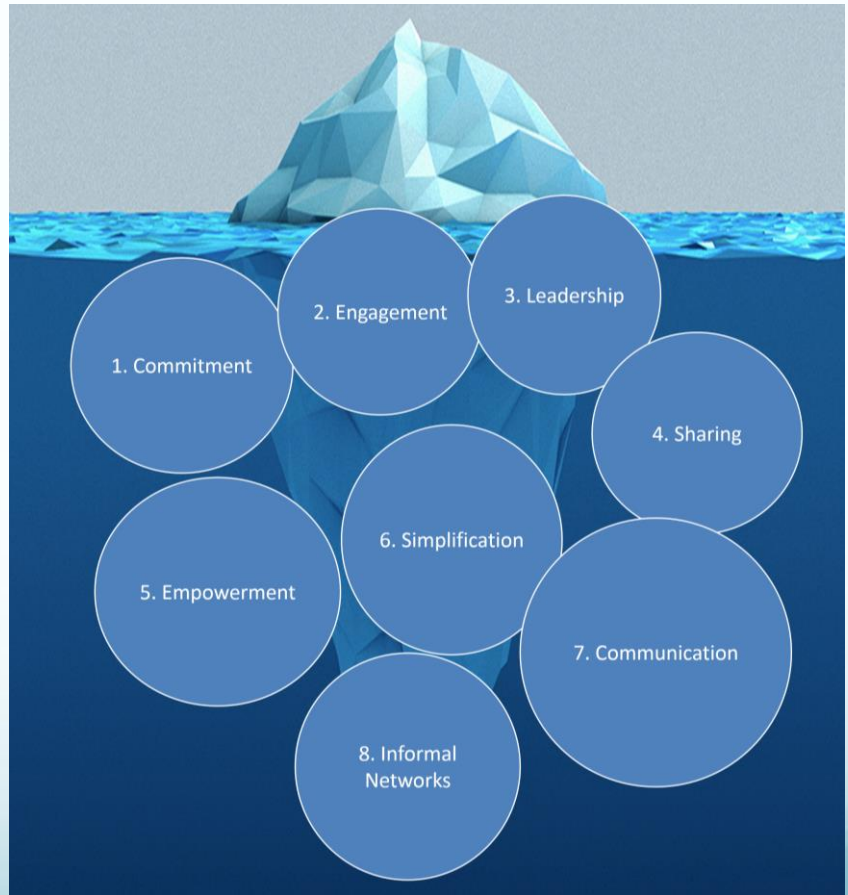


Adaptation Workplan

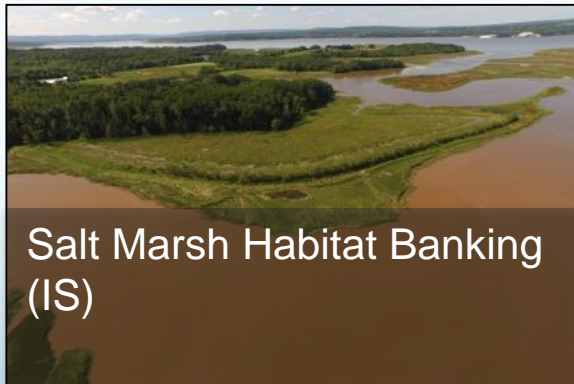
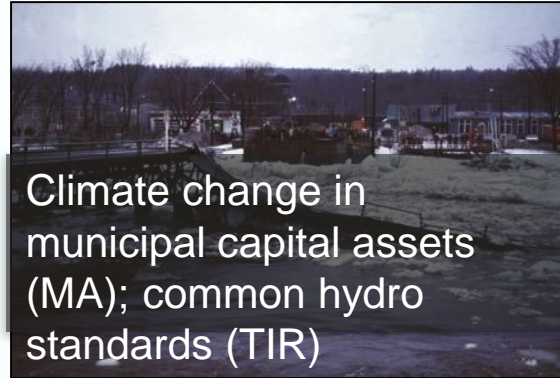
Workplan intentionally designed to mainstream adaptation throughout government by strengthening cultural elements associated with making progress on complex problems

Integrated approach and elements

- Projects
- Learning
- Reflective practice



Adaptation Projects



What's different?

- Not always using the language of climate change and adaptation; broader focus on risk and opportunity and the things people care about
- Project co-design and implementation
- Not a cookie cutter approach
- Commitment to meaningful outcomes
- A more novel approach to monitoring and evaluation
- Courses on capacity building



Challenges

- Business as usual is powerful
- Incomplete commitment (picking and choosing)
- Broadening the scope
- Turf wars
- We are addicted to certainty and status quo

Last words

- Adaptation Workplan is Nova Scotia's programme of action for mainstreaming adaptation within NS government
- To date, there has been an overreliance and focus on the technical; need to talk openly about culture as well
- Need to monitor and evaluate behavior changes as well as other indicators
- We're happy to share our workplan programme and research
- How are you tackling cultural factors in your work?

Contact Us

- Jen Graham Jen.Graham@novascotia.ca
- Kyla Milne kyla.milne@novascotia.ca
- Brittany White Brittany.White@novascotia.ca